

FASTENER, SEALANTS, ACCESSORIES

These items may be ordered with FRP panels or independently. Many items are in stock for quick delivery.

STAINLESS STEEL SELF-TAPPING SCREWS

Type 'B' Point is used to fasten panels to steel girts and purlins. These stainless steel fasteners come in various lengths and are 1/4" diameter. The standard fasteners come with a pre-assembled stainless steel backed neoprene washer in 3/4" (.729") diameter. A 5/8" diameter washer is available when required for certain profiles. A 1-1/8" diameter washer, designed for high wind and impact loads is also available. The fasteners are available in 300 series stainless steel. For extreme or unusual conditions, contact us for special fastener availability.



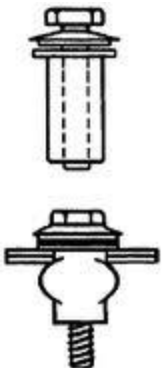
(14 threads per inch)

Type 'A' Point is similar to a 'B' point fastener except it is used to fasten panels to a wood framing. The 'A' point can also be used to attach panels to pultruded FRP structural shapes.



(10 threads per inch)

SB-2 SIDE LAP FASTNER



The SB-2 is a grommet type fastener used to fasten the side laps between two panels. They are also used to attach a flashing member to a panel in an area where there is no structural backing. The SB-2 has a stainless steel hex head machine screw with a neoprene sleeve, 3/8" diameter by 1-1/4" long. As the head is tightened, the grommet expands and provides an effective seal, as well as flexibility, for normal expansion and contraction.

BUTLY TAPE

Butyl tape is used to seal the side and end laps on opaque panels. It has aggressive tack which assures positive positioning and maximum surface contact. It easily conforms to irregular joint areas and provides tough durable corrosion resistant seal against ingress of water and dirt. Butyl tape is available in 45' rolls 1/8" thick by 3/8" wide.



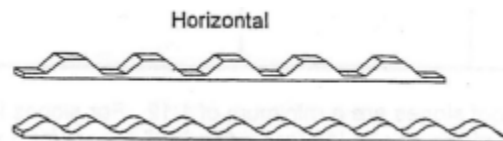
CLEAR SILICONE SEALANT

This clear sealant is used to seal the side and end laps on translucent panels. It is permanently pliable with good application characteristics. It is available in a 10 oz. spouted cartridge and coverage is approximately 25 lineal feet per cartridge using a 1/4" bead.



CLOSURE STRIPS

To give a better appearance and weather tightness, configured E.P.D.M. composition closure strips are recommended for sealing openings created at such areas as ridges, eaves, door openings, etc. They are available in both horizontal and vertical types for most profiles.



Vertical

